

Measure

Detect & Control

Sense & Protect

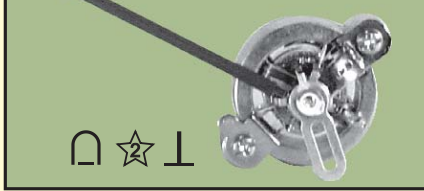


KAYCEE

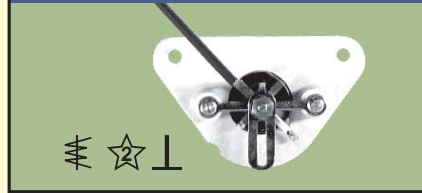
Brand that set the standards



MOVING COIL 90° MOVEMENT



MOVING IRON MOVEMENT



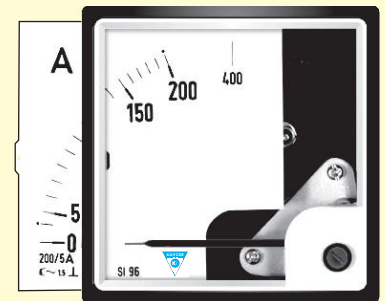
Analog Meters

Features:

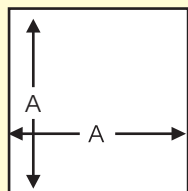
- Conforms to IS 1248
- High coercive magnetic circuit for moving coil
- Oil damped movement with recessed jewels for moving iron
- Spring back sapphire jewels to neutralize the vibration
- Linear dials & Interchangeable Dials
- High Torque / Weight Ratio
- Shielded Movements
- Suppression: Scale Suppression Available for Ammeter
- Conforms to Ip52 protection

Technical Specification			
Instruments Type	Moving Iron MI	Moving Coil MC	Rectifier Type with Moving Coil
System	A.C 	D.C 	Rectifier
Size	48x48 72x72 96x96 144x144	48x48 72x72 96x96 144x144	48x48 72x72 96x96 144x144
Range	50mA-30A 10V-600V	100/uA-30A 50mV-600V	100m A-20A 10V-600V
Accuracy Class	1.5 or 1.0	1.5 or 1.0	1.5 or 1.0
Shunts & CTS	Ext. CT Available from 50/5A to 3000/5A more than 3000A optional	Ext. Shunts Available from 15A-10,000A with 50mV, 60mV & 75mV	1 Phase or 3 Phase (1 Element)
Voltage Proof	2kV	2kV	3kV

Product Code	Product Description
KM1101	MI 48x48 Ammeter
KM3101	MI 72x72 Ammeter
KM4101	MI 96x96 Ammeter
KM5101	MI 144x144 Ammeter
KM1101-1	MI 48x48 Ammeter W/O Dial
KM3101-1	MI 72x72 Ammeter W/O Dial
KM4101-1	MI 96x96 Ammeter W/O Dial
KM5101-1	MI 144x144 Ammeter W/O Dial
KM1102-1	MI 48x48 Voltmeter (10-300V)
KM1102-2	MI 48x48 Voltmeter (350-600V)
KM3102-1	MI 72x72 Voltmeter (10-300V)
KM3102-2	MI 72x72 Voltmeter (350-600V)
KM4102-1	MI 96x96 Voltmeter (10-300V)
KM4102-2	MI 96x96 Voltmeter (350-600V)
KM5102-1	MI 144x144 Voltmeter (10-300V)
KM5102-2	MI 144x144 Voltmeter (350-600V)
KM1201	MC 48x48 Ammeter
KM3201	MC 72x72 Ammeter
KM4201	MC 96x96 Ammeter
KM5201	MC 144x144 Ammeter
KM1201-1	MC 48x48 Ammeter W/O Dial
KM3201-1	MC 72x72 Ammeter W/O Dial
KM4201-1	MC 96x96 Ammeter W/O Dial
KM5201-1	MC 144x144 Ammeter W/O Dial
KM1202	MC 48x48 Voltmeter
KM3202	MC 72x72 Voltmeter
KM4202	MC 96x96 Voltmeter
KM3303-1	72x72 Frequency Meter Analog (45-55Hz)
KM4303	96x96 Frequency Meter Analog (45-55Hz)
KM4308-1	1PH Power Factor Meter Trd. Type
KM4308-2	3PH 1Ele Power Factor Meter Trd. Type
KM4308-3	1PH Power Factor Meter Dyn. Type
KM4308-4	3PH 1Ele Power Factor Meter Dyn. Type
KM4305-1	96x96Watt Meter – 1ph
KM4305-2	96x96 Watt Meter – 3ph 1E
KZ1	Dial 48x48
KZ2	Dial 72x72
KZ3	Dial 96x96
KZ4	Dial 144x144

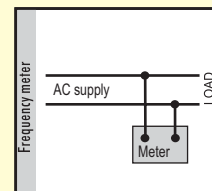
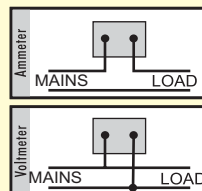


PANEL CUT-OUT



Meter Bezel Dimension	Cutout A (mm)
144x144	136x136
96x96	92x92
72x72	68x68
48x48	44x44

CONNECTION DIAGRAMS



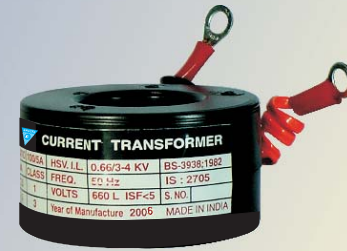
Current Transformer / Shunt

Features :

- Housed in FR grade ABS plastic
- BUS BAR mounting (Square CT)
- Cable insertion facility
- Finger proof terminals (square CT)
- Sonic welded plastic case
- Temp. Rating – 40°C to +70°C
- Insulation class E
- Nominal Voltage: 660V AC

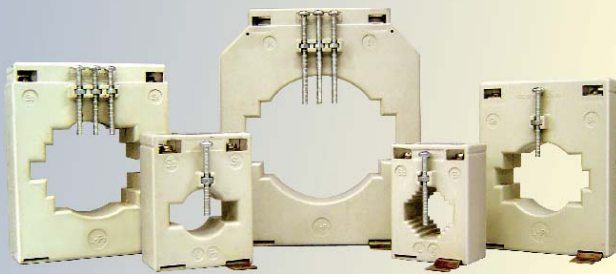
Product Code	
KC22-1	CT Ring Type (50-200/5A)
KC22-2	CT Ring Type (250-750/5A)
KC22-3	CT Ring Type (800-1200/5A)
KC22-4	CT Ring Type (1300-1600/5A)
KC22-5	CT Ring Type (2000-3000/5A)

For CT1A Start Code by KC12 instead of KC22



ABS Ring Type & Tape Wound CT Dimensions

Range	ID	OD	HT	VA Burden
50/5A to 75/5A	33	66	36	3
100/5A to 200/5A	33	66	36	5
300/5A to 600/5A	60	100	36	10
800/5A	80	100	35	10
1000/5A to 1200/5A	80	100	35	15
1500/5A to 3000/5A	100	135	35	15



Product Code	
KC301	Bus Bar size: 30x10mm
KC401	Bus Bar size: 40x12.5mm
KC601	Bus Bar size: 60x10mm
KC801	Bus Bar size: 80x10mm
KC1001	Bus Bar size: 100x10mm

Accuracy Class KC 301

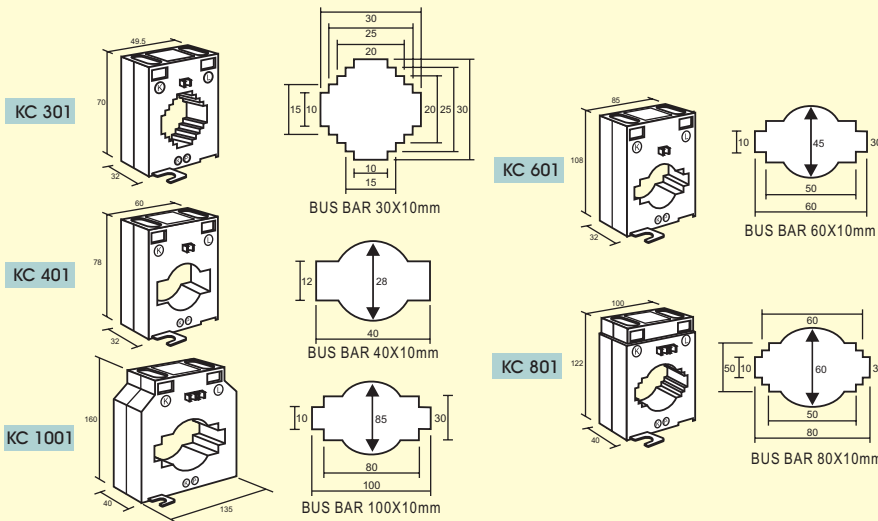
Primary Current	1 VA	2.5 VA	5 VA
75	3		
80	3		
100	1		
125	1		
150	1	3	
200		1	
250		1	
300		1	
400			1

Accuracy Class KC 401

Primary Current	2.5 VA	5 VA
150	1	
200	1	
250	1	
300	1	
400		1
500		1
600		1

Accuracy Class KC 601

Primary Current	10 VA	15 VA	VA
400	1		
500	1		
600	0.5	1	
800	0.5	1	
1000	0.5	1	
1200		1	
1500		1	
1600		1	



Accuracy Class KC 801

Primary Current	5 VA	10 VA	15 VA
400	1		
500	1		
600	1		
800		0.5	1
1000		0.5	1
1200		0.5	1
1500		0.5	1
1600		0.5	1
2000		0.5	1

Accuracy Class KC 1001

Primary Current	10 VA	15 VA	30VA
800	0.5	1	
1000		0.5	
1200		0.5	
1500		0.5	
1600		0.5	
2000		0.5	1
2500		0.5	1
3000			0.5
4000			0.5

SHUNTS... KS Series

- Accuracy Class 1.0 or 0.5%
- Range 15 - 10,000 Amps DC
- mV Drop 50, 60 or 75mV
- End blocks copper / brass section
- Resistive element is Manganin
- Special surface treatment prevent oxidation
- Conforms to IS1248



Detect & Control

Sense & Protect

Features

- 3 digit 14.2mm bright LED 7 segment display
- Protection conforms to IP20, & Conforms to IS Standards
- Site selection CT ratio by DIP switch
- Polycarbonate Casing
- GF nylon moulded clamps with screws
- Cut out conforms to DIN 43700

Technical Specifications:

- Accuracy class : 1.0 (0.5 optional)
- Auxiliary Supply : 230 or 110V AC or 80-270 V AC-DC (optional)
- I/P voltage/current : 110V/240V/440V AC & current 1A or 5A (for W, PF, VAR)
- Ambient Temperature : -10° C to 55° C
- Humidity : < 95% RH non condensing
- Mounting : GF nylon moulded clamps with screws
- Panel Cut Out : 44x92mm & 92x92mm



Applications:

- Electric Panels - Industrial HT & LT panels
- Motor Control centers
- Distribution Control & relay Panels
- Air conditioning & Refrigeration Panels
- Wind Energy Plant & Gensets
- Generation, Transmission & Distribution Panels
- Test benches, Lab equipment & UPS System



Digital Meter

Series	Parameter	System Description	Size mm	Range
KM	Volt	1ph. Voltage (AC/DC)	96x96 / 48x96	20mV, 2V, 20V, 200V upto 750V
KM	Volt	3ph. AC (selector switch)	96x96	500V AC only
KM	Amps	1ph.Amps (AC / DC)	96x96 / 48x96	0-2mA, 20mA, 200mA, 2A, 20A
KM	Amps	3ph.AC (inbuilt selector switch)5A	96x96	5AC or any / 5A
KM	Amps	Ammeter AC with AIP switch for CTR	96x96	For CTR 100 - 1600A
KM	Hz	Frequency	96x96 / 48x96	20 - 99.9Hz
KM	Watt	1ph 1E, 5A or 1A Voltage	96x96	2000W
KM	K/M Watt	3ph 2E3W, 5A or 1A Voltage	96x96	4kW/MW
KM	K/M Watt	3ph 3E4W, 5A or 1A Voltage	96x96	4kW/MW
KM	Power Factor	1ph 1E, 5A or 1A Voltage	96x96	0.5 lag - 1 - 0.5 lead
KM	Power Factor	3ph 1E, 5A or 1A Voltage	96x96	0.5 lag - 1 - 0.5 lead
KM	Power Factor	3ph 2E3W, 5A or 1A Voltage	96x96	0.5 lag - 1 - 0.5 lead
KM	Power Factor	3ph 3E4W, 5A or 1A Voltage	96x96	0.5 lag - 1 - 0.5 lead
KM	Var	3ph 2E3E, 5A or 1A Voltage	96x96	4kVar / MVar

Product Code	Product Description
KM2402-1	48x96 1PH Voltmeter(20mV - 350V)
KM402-2	48x96 1PH Voltmeter(400V - 750V)
KM2402	48x96 3PH Voltmeter
KM4402-1	96x96 1PH Voltmeter
KM4402-2	96x96 3PH Voltmeter
KM2401	48x96 1PH Ammeter
KM4401-1	96x96 1PH Ammeter
KM4401-2	96x96 3PH Ammeter
KM4401-3	96x96 3PH Ammeter with Selector Switch
KM2403	48x96 Frequency Meter
KM4404	96x96 Frequency Meter
KM4405-1	96x96 1PH Wattmeter
KM4405-2	96x96 3PH Wattmeter
KM4408-1	96x96 1PH Power Factor Meter
KM4408-2	96x96 3PH Power Factor Meter

Features

- 3 Digit Super bright LED Display for crystal clear long distance view
- Protection conforms to IP20 & Conforms to IS Standards
- Dual Slope A/D Conversion
- CT Ratio user Selectable from Keypad
- Cut outs conforms to DIN 43700
- Size Available : 48x96, 96x96mm



Technical Specifications:

- Accuracy class : 1.0% or 0.5% of FS ± 2 Digit
- Auxiliary Supply : 230 or 110V AC; 50 Hz (-20% ~ +15%)
- Burden on Aux < 3 VA
- Ambient Temperature: 0°C to 55°C
- Humidity : < 90% RH non condensing
- Dimensions - KM 440 - 96x96x80mm (LxWxD)
- Dimensions - KM 240 - 48x96x80mm (LxWxD)
- Panel Cutout - KM 440 - 92x92mm KM 240 - 44x92mm
- Parameter measured - Voltage, Amps,
- KW, Power Factor, Hz, 1 Phase & 3 Phase

Models available ...

- * DC meters are available only in the size 48x96mm
 - DC Ammeter range - 0-200mA, 4-20mA, 0-2/20A
 - DC Voltmeter range - 0-200mV, 0-2/20/200/500V, Optional 750V Available
- * AC Meters available in 48x96 & 96x96mm
 - AC mV – 0 – 200mV
 - AC – 0 – 2/20/100/200/500V
- * 3 phase Volt meter, power factor, KW – 110/415/440 AC (L-L) 500V max.
- * 3 phase Ammeter, power factor, KW – 1A or 5A
- Resolution for KW meter
 - 1A - 10A : 0.001KW
 - 11A - 100A : 0.01 KW
 - 101A - 1000A : 0.1 KW
 - 1001A - 9999A : 1 KW



Digital Panel Meters	Product Code
Single Phase Ammeter (96x48)	KM240011
Single Phase Voltmeter (96x48)	KM240012
Single Phase Ammeter (96x96)	KM440011
Three Phase Ammeter with In built selector switch (96x96)	KM440031
Single Phase Ammeter (96x96) with cutoff	KM440051
Single Phase Voltmeter (96x96)	KM440012
Three Phase Voltmeter with In built selector switch (96x96)	KM440032
Three Digit Frequency meter	KM440003
Three Phase PF meter	KM440008
Three Phase KW meter	KM440005

Measure

Detect & Control

Sense & Protect

Multi Function Meter

KM440076 - COS ϕ & KW Meter

- Micro controller Based Design.
- Built in Solid state selector switch for phase selection
- LED display for crystal clear long distance day light viewing
- All CT ratios user Programmable through front Keypad
- Built in Transducer
- True RMS measurement

Technical Specifications :

System	: 3 Phase 4 Wire / 3 Phase 3 Wire	Accuracy	: ± 1 Electrical Deg.
Aux. Supply	: 230V / 110VAC 50Hz (-20% + 15%)	Power Factor	: Class 1.0 IEC 61036
Burden on Aux.	: < 4 VA	Watts	: Bezzel: 96x96mm
Voltage Input	: 110 / 415 / 440 VAC (L - L) 500Vmax	Dimension	: Depth (behind bezzel) : 80mm Panel Cut out : 92x92 mm
Current Input	: 1 Amps / 5 Amps	Resolution	: Power Factor : 0.01
Burden on CT	: < 0.2 VA	Watts	: 1A - 10A : 0.001KW 11A - 100A : 0.01 KW 101A - 1000A : 0.1 KW 1001A - 9999A : 1 KW
Temp	: 0 - 55 $^{\circ}$ C		
Humidity	: < 90% RH (non condensing)		



KM440006 - VAF Meter

- Micro controller based Design
- LED display for crystal clear long distance day light viewing
- All CT ratios user Programmable through front Keypad
- Compact Size 96x96x80mm
- Four Digit Frequency Meter
- Optional time measurement facility is available



KM440056 - VAF with Load Graph

- Most Advanced VAF Meter with Bar Graph for Load Current
- Microcontroller Based Design
- All CT ratios user Programmable through front Keypad
- Relay output for cutoff/Alarm
- User Programmable Alarm Set Point, Time Delay & CT Ratio
- True RMS measurement
- Password protection

Alarm/Trip:

1) Under Voltage 2) Over Voltage 3) Over Load 4) Phase Sequence Reversal 5) Phase Failure

Technical Specifications of KM440006 - VAF Meter & KM440056 - VAF with Load Graph:

System	: 3 Phase 4 Wire / 3 Phase 3 Wire	Accuracy	:
Aux. Supply	: 230V/110VAC 50Hz (-20% +15%)	Voltage	: 0.5 % of FS ± 2 Digit
Burden on Aux.	: < 4 VA	Current	: 0.5 % of FS ± 2 Digit
Voltage Input	: 110 / 415 / 440 VAC (L - L) 500Vmax	Frequency	: ± 0.02 Hz
Current Input	: 1 Amps / 5 Amps	Resolution:	
Burden on CT	: < 0.2 VA	Volts	: 1V
Temp	: 0 - 55 $^{\circ}$ C	Hz	: 0.1 Hz
Humidity	: < 90% RH (non condensing)	Amps	: 0 - 99 : 0.1 A 100 - 999 : 1A > 1000 : 0.01 KA
		Dimension	: 96x96mm, Depth : 80mm
		Panel Cut out	: 92x92mm



Multi Function Meter

Detect & Control Sense & Protect

KM4406-1

Features :

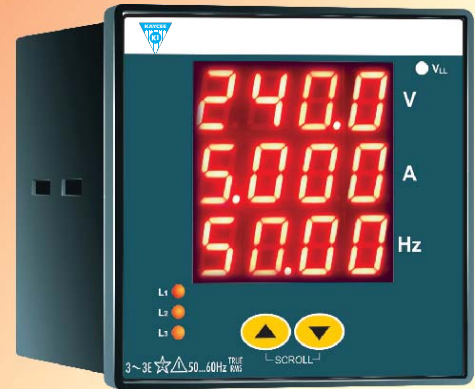
- True RMS Measurements
- 4 Digits 7 segments bright display
- Switchable CTR adjustment by DIP switch
- Finger proof self lifting terminals
- Scroll & data hold facility
- Conforms to IS standards

Technical Specifications:

System	: 3PH4W / 3PH3W / 1PH
Input Voltage/Current/Frequency	: 50-500V / 1A or 5A / 45-65Hz
Accuracy	: +/-0.5% of F. S. +1 Digit
Relay Contact	: 250VAC/2A max or 24VDC/2A maximum (optional)
Dielectric Strength	: 2. 0KV for 1 Min.
Protection	: Conforms to IP54 for front option & conforms to IP 20 for terminal block
Casing	: Polycarbonate casing
Ambient temp	: -10° C to 55° C. & Storage : - 20° C to 70° C
Humidity	: <95% RH, non condensing

Applications :

- Electrical Panels - Industrial HT & LT panels.
- Motor Control centers.
- Distribution Control & relay panels.
- Air conditioning & refrigeration Panels.
- Wind Energy Plant & Gensets.
- Generation, Transmission & Distribution Panels.



KM4406-2

Features :

- True RMS Measurements
- Auto range change over to Kilo, Mega & Giga
- 4 Digits 7 segments bright display
- Switchable CTR adjustment by DIP switch
- Finger proof self lifting terminals
- Scroll & data hold facility
- Conforms to IS standards
- Computer interface RS 485 (optional)

Technical Specifications:

System	: 3PH4W / 3PH3W / 1PH /
Input Voltage/Current/Frequency	: 50-500V / 1A or 5A / 45-65Hz
Accuracy	: +/-1.0% & optional 0.5% of F. S. +1 Digit
Relay Contact	: 250VAC/2A max or 24VDC/2A maximum (optional)
Dielectric Strength	: 2. 0KV for 1 Min.
Protection	: Conforms to IP54 for front option & conforms to IP 20 for terminal block
Casing	: Polycarbonate casing
Ambient temp	: -10° C to 55° C. & Storage : - 20° C to 70° C
Humidity	: <95% RH, non condensing

Applications :

- Electrical Panels - Industrial HT & LT panels.
- Motor Control centers.
- Distribution Control & relay panels.
- Air conditioning & refrigeration Panels.
- Wind Energy Plant & Gensets.
- Generation, Transmission & Distribution Panels.



Multifunction Meters

Product Code	Parameter	System Description	Size Available in mm	Acc. Class +/- %
KM4406-1	A, V, Hz	Ir, Vr, Vrn (Per phase & Avg) & Hz (VAF Meter)	96x96	1.0
KM4406-2	A,V, Hz W,P,F, Wh	Multifunction Meter 6 Parameter	96x96	1.0

Features:

- True RMS measurement & 4 quadrant operation
- Programable CT/PT Ratio, Calender, Max. demand
- 3Phase Star / Delta jumper selectable
- Monitor Energy
- Auto Scrolling with 4 functional keys
- Flush mounting micro controller based, Multilayer PCB with SMT technology
- Measures 36 parameters on 23 display pages simultaneously
- RS 232 or RS 485 serial port with MODBUS RTU protocol to communicate with PC (optional)
- Polycarbonate Casting
- Alarm Facility

Measurement Specifications:

Voltage : L-L & L-N & Avg.
 Current : 3ph & Avg.
 PF : 3ph & Avg.
 kW, kVA, kVA_r 3ph & total
 Hz, kWh, kVA_h, kVA_rh & MD (KW or kVA)

Technical Specifications:

Aux : 110/230V AC or 80-270V AC/DC
 I/P Voltage/Current : 80V-500VAC/ 5A or 1A
 Accuracy : +/-0.5% (+/-1.0% for integration parameter)
 Ambient : -10° C to 55° C. Storage : - 20° C to 70° C
 Humidity : <90% RH, non condensing
 Dimensions
 Front : 96x96mm
 Cutout : 92x92mm
 Protection : IP54 (for front) IP20 (for terminal)

Applications :

- Power distribution Panels.
- Switchboards / Building Management.
- System / Process Control & SCADA
- Power Management / QC testing
- Control Panels / Genset / Energy Audit / Data logging.

Load Manager

Product Code	Description	Size Available in mm
KM4407-1	Load Manager W/O Communication Port	96x96
KM4407-2	Load Manager with RS485 Port	96x96
KM4407-3	Load Manager with RS232 Port	96x96
KM4407-4	Load Manager with pulse output	96x96

LED



LCD



Power Analyzer

Detect & Control
Sense & Protect

KM 440007 - Load Manager

- True RMS Measurements
- Can view Phase wise & System parameter on same page
- CT & PT Ratio User Programmable from Keypad

Optional:

- EEPROM to retain set parameters
- Pulse output for PLC/ SCADA Interface
- Computer Interface via RS 485
- Data Logging facility with Time Stamping

Technical Specifications :

System	: 3 Phase 4 Wire / 3 Phase 3 Wire	Accuracy :	
Aux. Supply	: 230V/110 VAC 50Hz (-20% +15%) optional universal	Voltage	: 0.5 %
Burden on Aux.	: < 4 VA	Current	: 0.5 %
Voltage Input	: 110/415/440 VAC (L - L) 500Vmax.	Active Power	: Class1.0 IEC 61036
Current Input	: 1 Amps/5 Amps	Reactive Power	: Class1.0 IEC 61036
Burden on CT	: < 0.2 VA	Apparent Power	: Class1.0 IEC 61036
Communication	: RS485 (Modbus - RTU Protocol)	Power Factor	: ± 1 Electrical Deg.
	9600 baud	Active Energy	: Class1.0 IEC 61036
Temp	: 0 - 55 ^o C	Reactive Energy	: Class1.0 IEC 61036
Humidity	: < 90% RH (non condensing)	Frequency	: ± 0.2 Hz
		Dimension	: 96x96mm
		Depth (behind bezzel)	: 80mm
		Panel Cut out	: 92x92mm



KM 440057 - Load Manager with MD

Features:

- True RMS Measurements
Voltage & Current, Frequency, KW, KVAR & KVA,
Power Factor
- Can measure Energy Import / Export, Demand etc...
- Computer Interface via RS 485, Modbus RTU
Protocol
- 4 Line LCD Display with Backlighting

Measurement:

- Instantaneous Phase Voltages, Line Voltages,
Phase & Line Currents, Frequency
- Active, Reactive, Apparent power & power factor
per phase & line
- Energy: Import & Export
- Maximum demand KVA, KW, KVAR

Technical Specifications :

Systems:	3 Phase 4 Wire
Voltage Input:	50 to 347 VAC
Current Input:	5 Amp nominal
Power Supply:	110V to 240VAC & VDC
Accuracy:	Overall accuracy – 0.5%
Voltage L-N:	0.25% reading
Current:	0.25% reading, Hz: 0.1Hz
Burden:	(@5A<0.05VA),20% over range full Accuracy
Environmental Conditions:	
	– 20 ^o C to + 60 ^o C ambient
	Storage: – 30 ^o C to +85 ^o C
	Humidity: 5% to 95% non-condensing
	Dimension: 96x96x96mm
	Panel Cutout: 92x92mm



KM 440067 - Power Analyzer

Shortly Launching Highly Advanced Meter

Besides all above can measure Harmonics Current / Voltage
Dimension: 96x96x80mm [LXHXD]



Measure

Detect & Control

Sense & Protect

Energy Meter

Features:

- True RMS measurements
- Site selectable CT Ratio by DIP switch
- Isolated pulse output for PLC, SCADA & DCS
- Selection of 3PH 3W or 4W by Jumpers
- Finger proof terminal cover (optional)
- Low VA Burden
- Polycarbonate Casing

Technical Specifications:

Auxiliary	: Self Powered
I/P Voltage / Current	: 80V-500V AC & 1A or 5A
Type	: 1PH / 3PH 3W / 3PH 4W
Operating frequency	: 45-55Hz
VA burden	: <8VA
Accuracy	: 1% (0.5% optional)
Resolution	: As per CTR table sticker on meter

Applications :

- Genset
- Electricity Board / Control Panels
- Power Distribution / Switchboards
- Process Control & SCADA building Management

Note: At the time of ordering please specify all technical details & system

Product Code	Description	Size Available in mm
KM4409-1	Electronic Energy Meter 1ph (counter type)	96x96
KM4409-3	Electronic Energy Meter 3PH 3W (counter type)	96x96
KM4409-3	Electronic Energy Meter 3PH 4W (counter type)	96x96
KM4409-4	Digital Energy Meter (LCD display type) 1PH	96x96
KM4409-2	Digital Energy Meter (LCD display type) 3PH3W	96x96
KM4409-2	Digital Energy Meter (LCD display type) 3PH4W	96x96



Energy Meter & Transducer

KM440014 - Energy Meter (KWh) 1 Phase

KM440009 - Energy Meter (KWh) 3 Phase

KM440059 - Energy Meter (KWh) 3 Phase, with RS 485 port

- Micro controller Based Design
- 6 Digit ultra bright Red LED Display, 10 digit counter (2 pages)
- All CT Ratio Site Programmable using front keypad
- True RMS measurement
- EPROM retains Energy Parameters on power fail
- Reverse Indication for wrong wiring polarity
- Pulse Output for PLC / SCADA interface

Technical Specifications :

System	: 3 Phase 4 Wire/ 3 Phase 3 wire/1 Phase	Humidity	: < 90% RH (non condensing)
Aux. Supply	: 230V/110VAC 50Hz (-20% +15%)	Accuracy	: Class1.0 IEC 61036
Burden on Aux.	: < 3 VA	Dimension	: Bezzel: 96x96mm
Voltage Input	: 415/440VAC (L - L) 500 V max.	Depth	(behind bezzel) : 80mm
Current Input	: 1 Amps/5 Amps	Panel Cut out	: 92x92mm
Burden on CT	: < 0.2 VA	Resolution	:
Temp	: 0 - 55 ^o C	1Amps/5 Amps	: 0.01 & above
Pulse Width	: 400 msec. ± 50 msec.	5A - 50 A	: 0.1 & above
		50A - 500A	: 1 & above
		> 500 Amps	: 10



KT Series - Transducers...

KT Series Features

- Converts signal into needed parameters
- Application - Data Loggers, PLC Input, SCADA, Recorders etc...
- Stable and High Accuracy Output
- External Span & Zero adjustment
- Low Internal consumption compact size
- Optional : Multiple Output

Specifications:

Aux. Supply	: 230V / 110VAC 50Hz (-20% +15%)
Burden on Aux.	: < 3 VA
Temp	: 0 - 55 ^o C
Humidity	: < 90% RH (non condensing)
Accuracy	: Class 1.0
Response time	: 0.5 sec.
Isolation	: 2 KV (4 KV on request)
Dimension	: 78x55x97mm (L x B x H)
Mounting	: Din rail 35mm, 2xM4 screw

Output:

DC V	: 0 - 1V (Burden : 1K) 0 - 5 / 1 - 5 V (Burden : 5K) 0 - 10 / 2 - 10 V (Burden : 10K)
DC mA	: 0 - 1mA (Burden : 10K) 0 - 5mA (Burden : 2K) 0 - 10 / 2 - 10mA (Burden : 1K) 0 - 20 / 4 - 20mA (Burden : 500 ohms)

KT 440001 - Voltage Transducer Input Ranges

AC V	: 110 / 230 300 / 440 / 500 VAC
DC V	: 0 - 1000 V DC



KT 440002 - Current Transducer Input Ranges

AC A	: 0 - 1 A, 5A (direct) CTR / 1A, CTR / 5A
------	--





KAYCEE INDUSTRIES LIMITED



32, Ramjibhai Kamani Road, Ballard Estate, Mumbai - 400 001
Tel.: 91-22-22613521 / 22 / 23 Fax: 91-22-22616106
Website: www.kayceeindustries.com
Email: kaycee_ho@cms.com, kayceeindltd@vsnl.com

Offices at:

- Bangalore** : # 9/2, First Floor, Dhondusa Complex, Residency Road, Bangalore - 560 025.
Mobile : 9342853324
- Chennai** : CMS Tower, 42, Cathedral Road, Chennai - 600 086. Mobile: 9381201556
- Kolkatta** : 10/D/2, Hocht Minh Sarani, 1st Floor, Kolkatta - 700 071.
Mobile : 9339200968
- New Delhi** : 35 - A, Rear Building, Near CTC Plaza, Opp. Maharani Bagh, Ring Road,
Kilokari, New Delhi - 110 014. Mobile : 9312004687
- Indore** : Mobile : 9300751464

REPUTED CUSTOMERS: ■ ABB ■ Crompton Greaves ■ L&T ■ Siemens ■ C&S ■ BHEL ■ GE Power ■ NTPC ■ ICF ■ RCF
■ Areva T&D ■ Schneider ■ HMT ■ Bharti Airtel ■ Reliance ■ Jyoti Ltd. ■ Mega Win ■ BSES ■ Hindustan Motors ■ Indian Railways