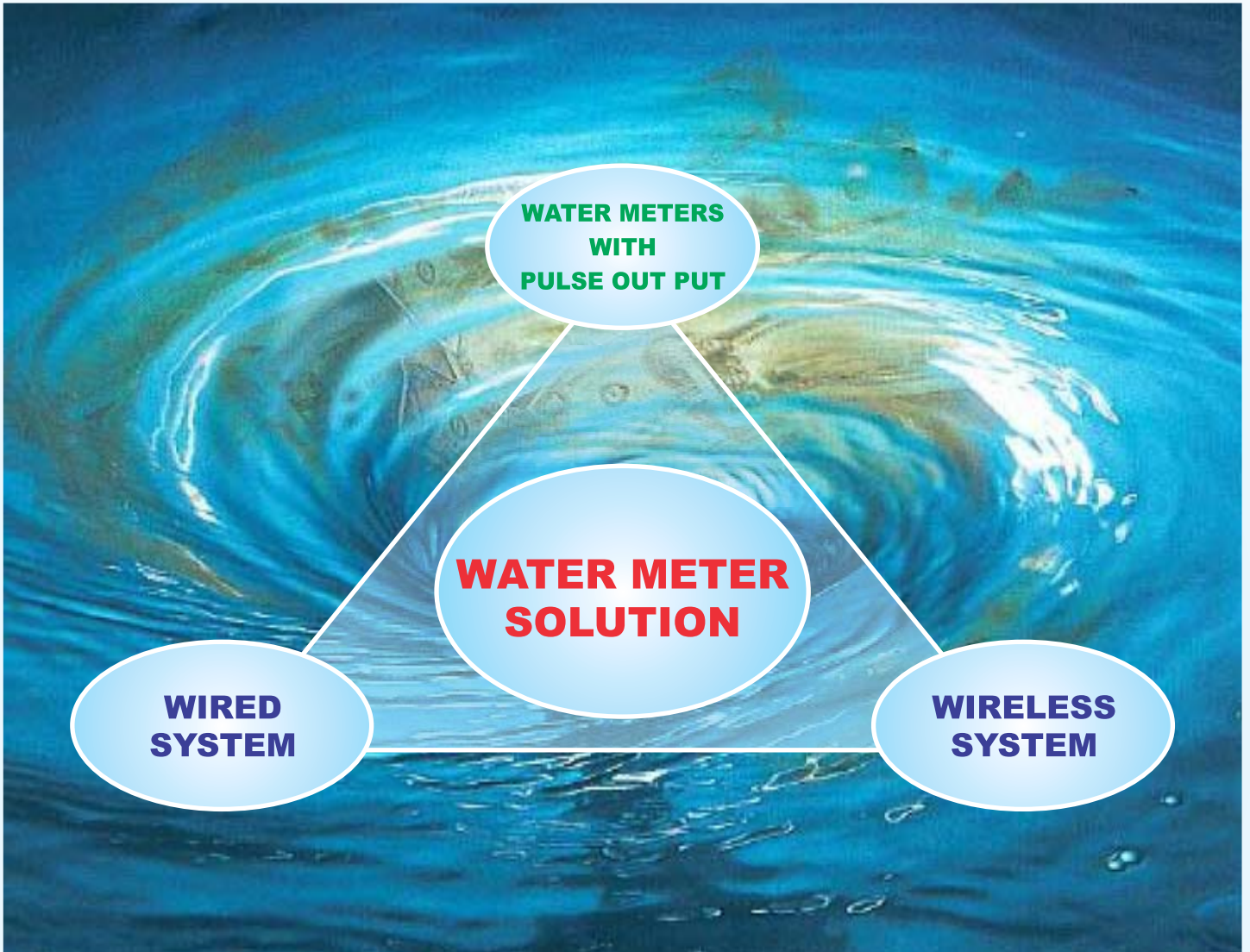




# KAYCEE

Brand that set the standards



*Save Water and Energy...., it's not only your money.*



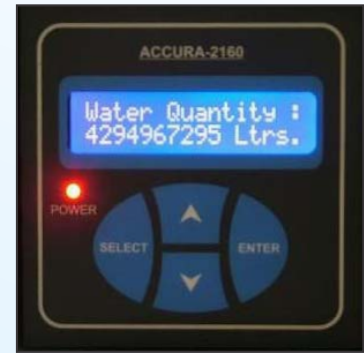
*But Its our furture.*

*Kaycee for Commitment...  
Kaycee for Quality...*



## FEATURE OF DISPLAY :

- Direct reading from water meter.
- Reading available in liters or meter cube as per requirement.
- Distace cover capacity 100Mtrs. (for wired system).
- User friendly.
- Battery back-up in case of Power failure.
- Low power consumption.
- Resetable LCD Display.
- Expandable for internal memory.
- Available with RS(232/485) out put or 4...20mA,0...5/10V with this future can be connect to software or PLC.
- Optional Set point out put available.
- Setable from front Key Pad.
- Designed with advance intelegent microprocessor.



## TECHNICAL SPECIFICATIONS :

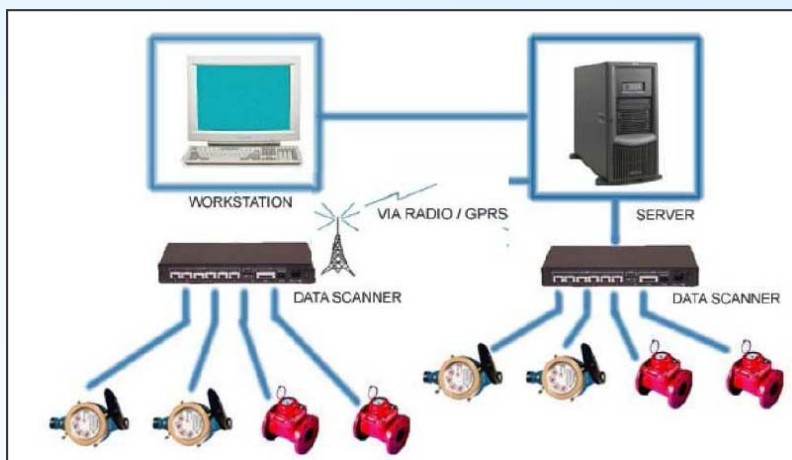
- ENCLOSURE : 96X96X200 Panel Mounting.
- POWER SUPPLY : AC 230V,5A,50Hz.
- INPUT : POTENTIAL FREE PULSES from water meter.
- DISPLAY : LCD Display
- RANGE OF DISPLAY : Setable in LTRS OR Meter Cube / Flow Rate.
- BATTERY BACK-UP : Display on demand button. Nickel cadium / NimH easially avilable in market.
- BATTERY CHARGING : By Flot charge method.
- WARNTTEE : 1YEAR (except Battery)

## AMR SYSTEM FOR WATER METERS

Available in two systems

1. WIRED SYSTEM
2. WIRE LESS SYSTEM

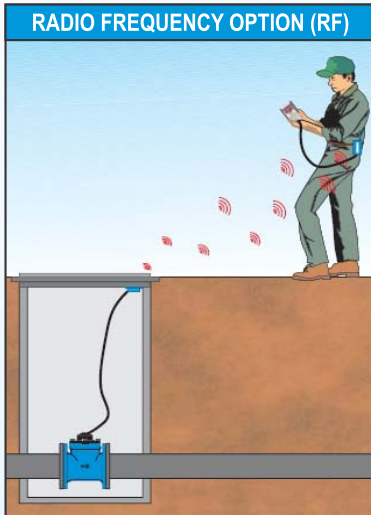
### 1. WIRED SYSTEM



### FEATURES :

- Easy to operate.
- Individual wires from meter to Datalogger helps to trace independently.
- Individual logger or Multichanel Logger Available.
- Dataloggers available with 1 / 8 / 16 chanel.
- Digital LCD Display.
- Scrling Facility available.
- Logging interval setable from minuts to Hour.
- Memory can be design as per requirement.
- Micro procesor control based.
- Password protection for logger.
- Readings available in meter cube, Flow Rate.
- RS(232/485)out put is available as per requirement.

## 2. WIRELESS SYSTEM



### FEATURES :

- Readings available in meter cube.
- Communication through single logger having out put RF / GSM / GPRS.
- User friendly.
- Password protection for logger.
- In RF the communication is possible upto 100mtr line of site(expandable).
- Digital LCD Display.
- Logging interval setable from minuts to Hour.
- Memory can be design as per requirement.
- Micro processor control based.

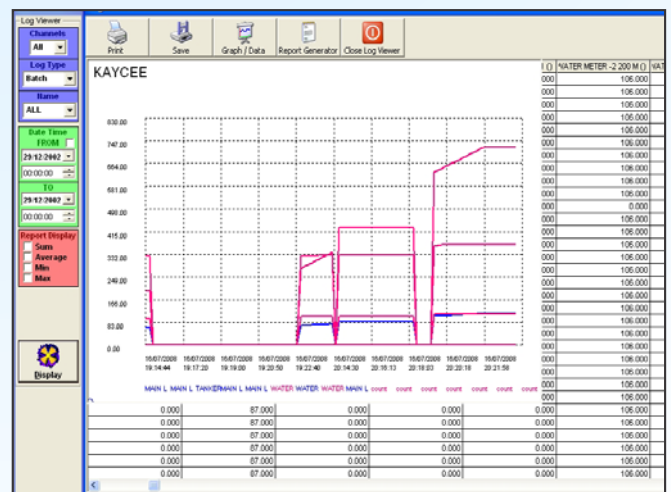
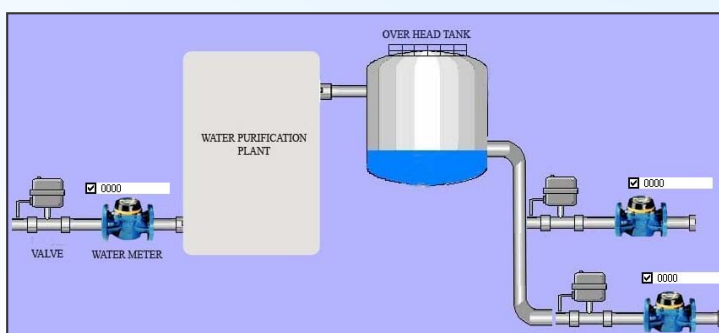
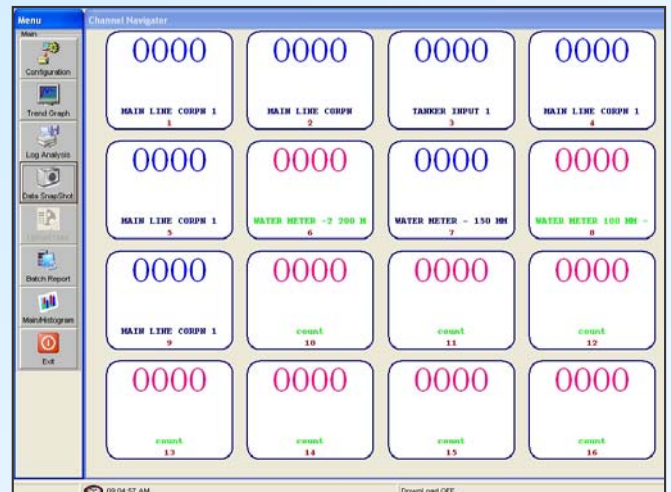
### TECHNICAL SPECIFICATIONS :

POWER SUPPLY : AC 230V,5A,50Hz.  
 INPUT : POTENTIAL FREE PULSES from water meter.  
 DISPLAY : LCD Display  
 RANGE OF DISPLAY : Setable in Meter Cube.  
 BATTERY BACK-UP : On demand  
 WARNTTEE : 1YEAR (except Battery)

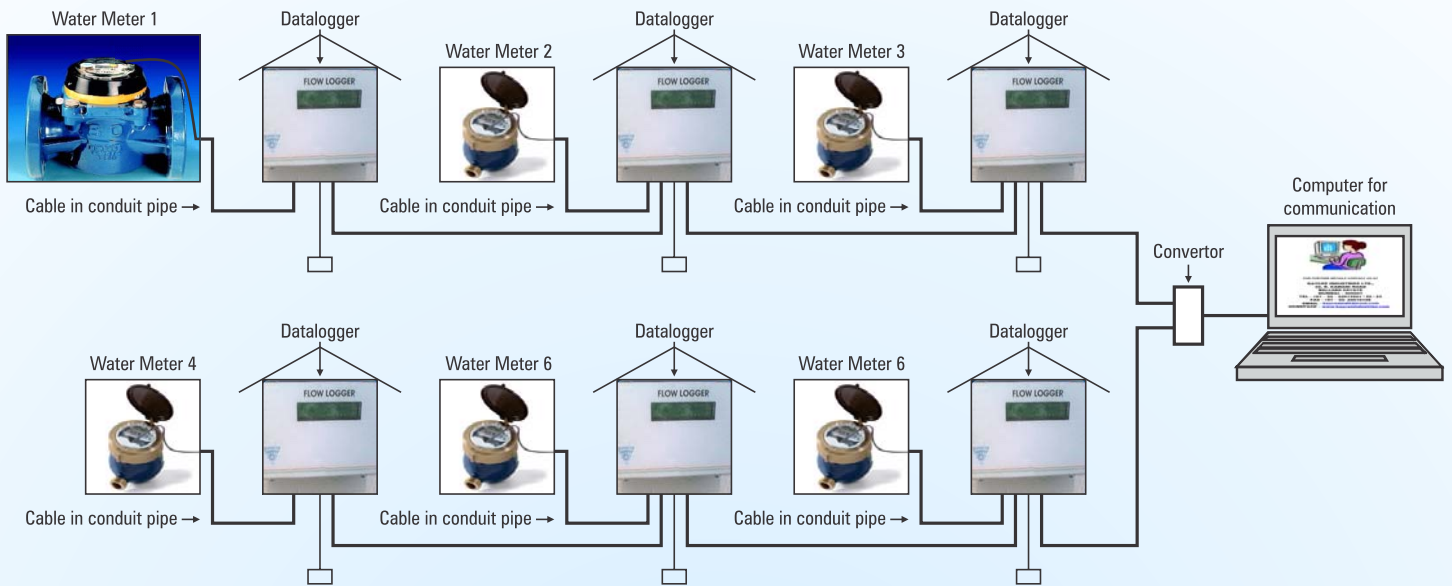
## SOFTWARE FOR WATER METER

### FEATURES :

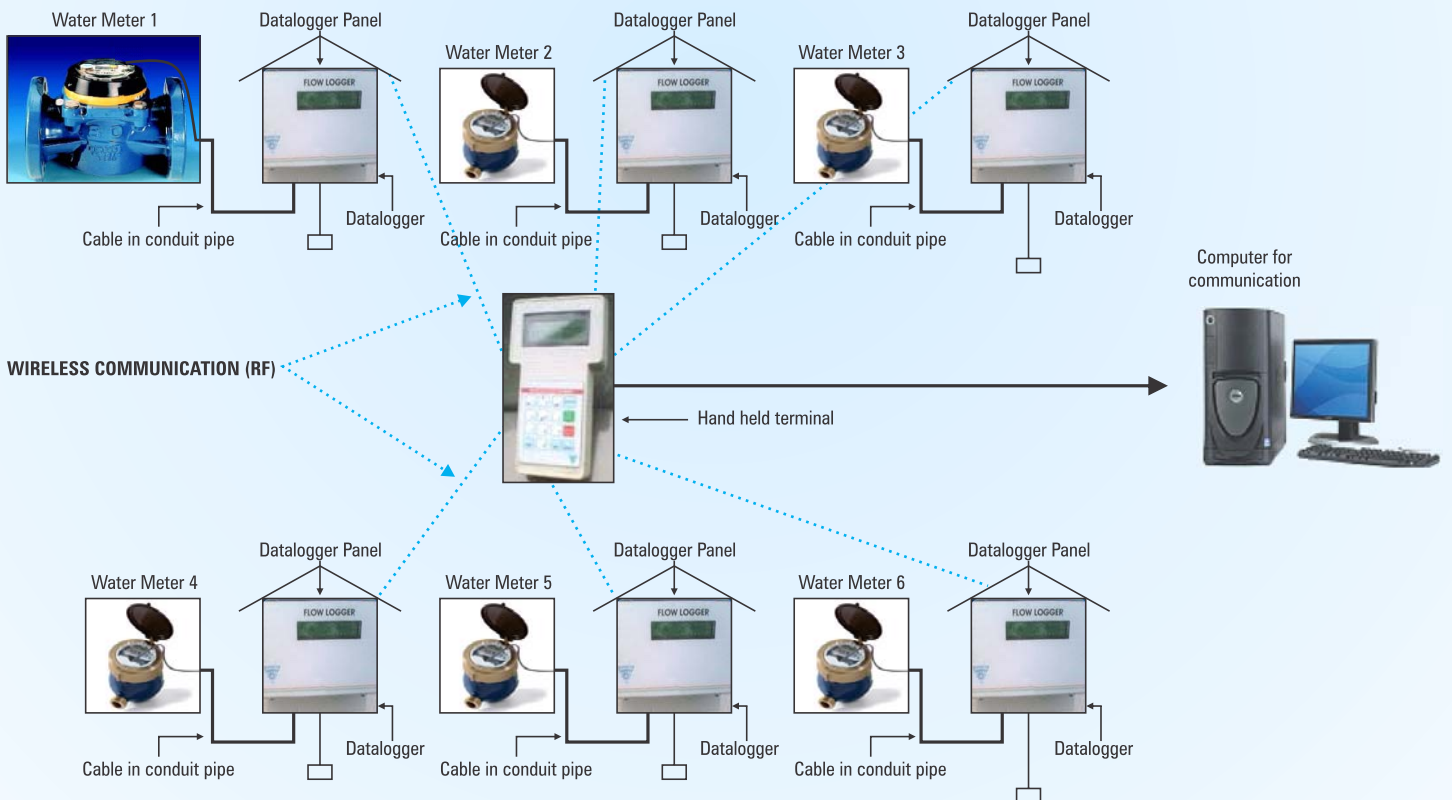
- Available as per requirement of customer.
- Online data communication is available.
- Alarm facility
- Nomenclature in software for individual meter & Hand held Terminal.
- Reports available as per DAY / WEEK / MONTH / YEAR for every meter.
- Graphical presentation.
- Billing software on demand.
- Connectivity to other meters( like Energy meters) on Demand.
- Line diagram feature available.



## TENTATIVE LAYOUT PLAN OF WATER METER AUTOMATION WIRE SYSTEM



## TENTATIVE LAYOUT PLAN OF WATER METER AUTOMATION RF/GSM/GPRS



Manufactured by :  
**KAYCEE INDUSTRIES LIMITED**

32, Ramjibhai Kamani Road, Ballard Estate,  
Mumbai - 400 001.  
Tel. : +91 (22) 2261 3521 / 22 / 23  
Fax : +91 (22) 2261 6106  
E-mail : kayceeindltd@vsnl.com  
Website : www.kayceeindustries.com

### Branch Offices :

Delhi : 093506 05156 Nashik : 098506 66743  
Kolkata : 093392 00968 Pune : 098222 51408  
Indore : 099770 05208  
Bangalore : 093428 53324  
Chennai : 093812 01556